

finPOWER Connect 4 to 6 Web Services Installation

Version 1.00
16th April 2025

Table of Contents

Disclaimer	3
Version History	4
Introduction	5
Installing the Microsoft Windows Desktop Runtime	6
Installing ASP.NET Core and Windows Server Hosting for IIS	7
Setup File	9
Application Pool Configuration	10

Disclaimer

All information, including code examples, contained in this document are provided "as is" without warranty of any kind, and Intersoft accepts no liability for any decisions made on the basis of this information.

This document contains information that may be subject to change at any stage.

It is your responsibility to make sure the information in this document is fit for purpose and you should seek independent professional advice where necessary.

Copyright Intersoft Systems Ltd, 2025.

Version History

Date	Version	Name	Changes
16/04/2025	1.00	PH	Created.

Introduction

This document is an extract from the full finPOWER Connect 6 Web Services Installation and Configuration guide.

It simply outlines the main installation differences between version 4, which used the .NET Framework and version 6, which uses .NET 9 (or later).

This guide can also be used when installing finPOWER Connect Cloud 6.

IMPORTANT: Version 6 of finPOWER Connect Cloud and finPOWER Connect Web Services target Microsoft .NET 9 or above (abbreviated to .NET 9+ in this document).

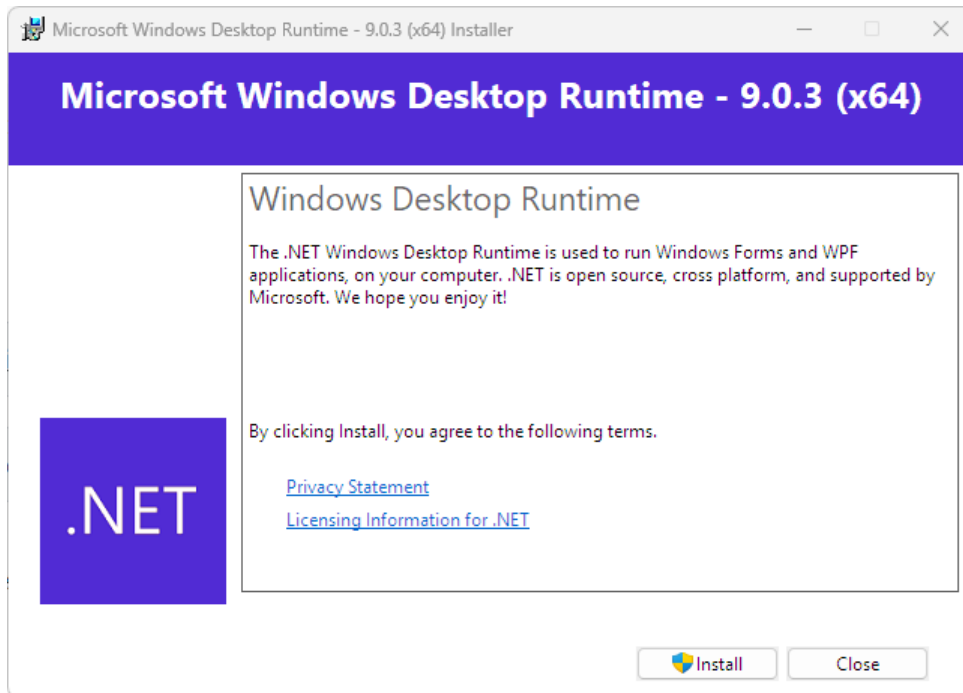
Previous versions targeted the Microsoft .NET Framework which is a significantly different environment.

Installing the Microsoft Windows Desktop Runtime

finPOWER Connect has dependencies on the Windows Desktop Runtime so installation of this is essential for Web Services to run correctly.

This can be downloaded from:

<https://dotnet.microsoft.com/en-us/download/dotnet/thank-you/runtime-desktop-9.0.3-windows-x64-installer>



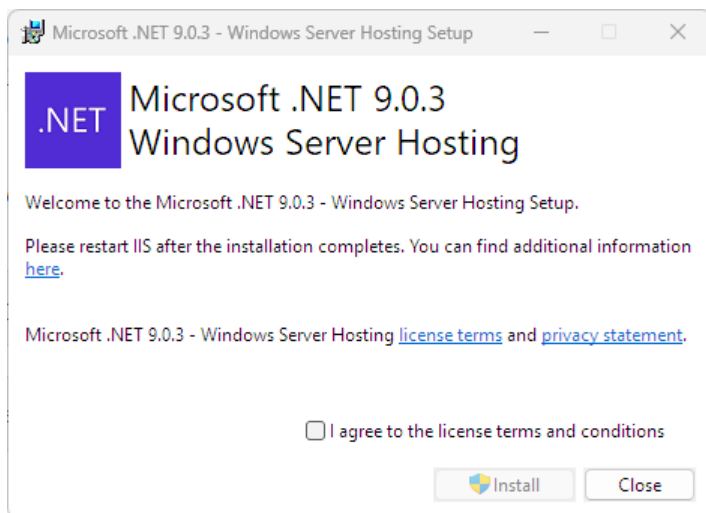
Installing ASP.NET Core and Windows Server Hosting for IIS

Installation of ASP.NET Core is essential to ensure that all the necessary features installed that are required by the Web Services and for IIS to be updated correctly.

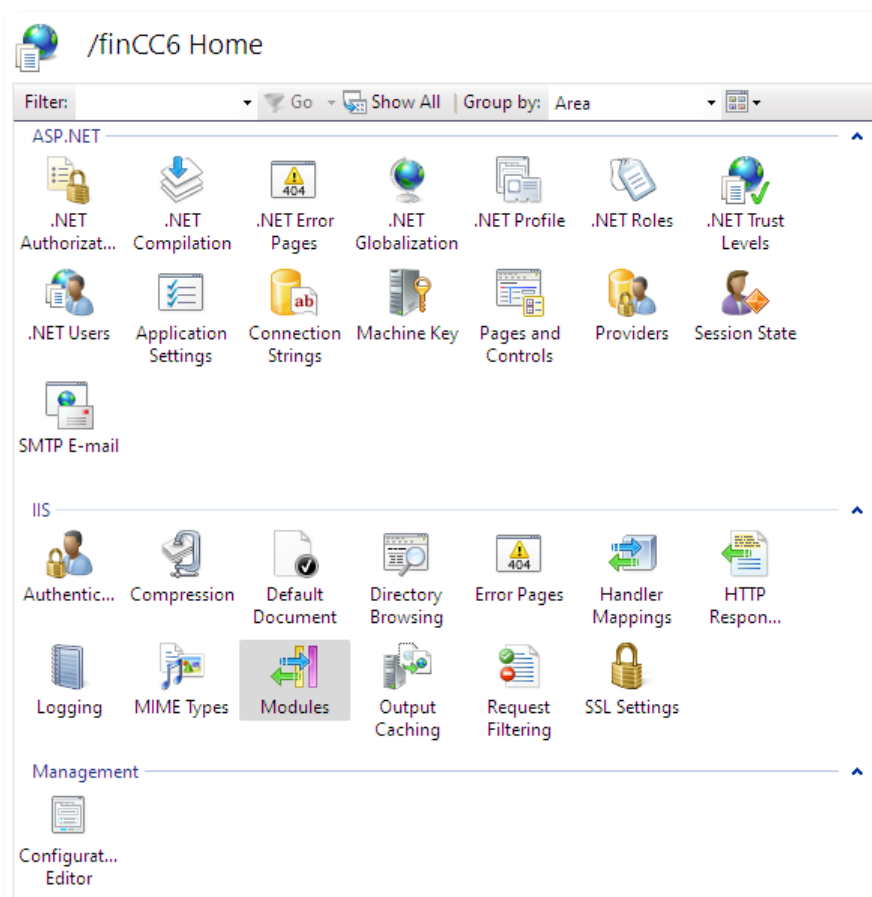
This can be downloaded from:

<https://dotnet.microsoft.com/en-us/download/dotnet/thank-you/runtime-aspnetcore-9.0.3-windows-hosting-bundle-installer>

Running the setup will take you through the installation process:



After installation, launching IIS Manager shows a "Modules" item:



Double-clicking this should now show an `AspNetCoreModuleV2` entry:

Modules

Use this feature to configure the native and managed code modules that process requests made to the Web server.

Group by: No Grouping

Name	Code	Module Type	Entry Type
AnonymousAuthenticationModule	%windir%\System32\inetsrv\...	Native	Inherited
AnonymousIdentification	System.Web.Security.Anony...	Managed	Inherited
ApplicationInitializationModule	%windir%\System32\inetsrv\...	Native	Inherited
AspNetCoreModuleV2	%ProgramFiles%\IIS\Asp.Net ...	Native	Inherited
ConfigurationValidationModule	%windir%\System32\inetsrv\...	Native	Inherited

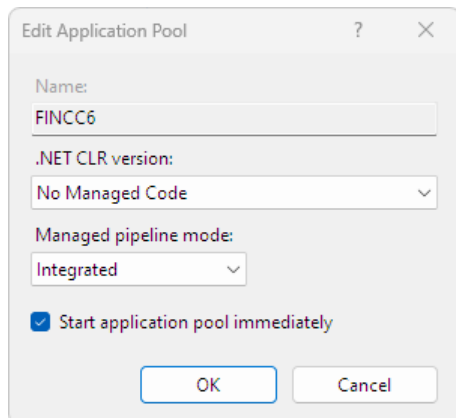
Setup File

- The Web Services are deployed as a zip file (**finPOWERConnectWSSetup.zip**). The latest version can be obtained from Intersoft Systems.
- The zip file contains a **Readme.htm** file detailing the version and any Web Services-specific Knowledge Base articles.
 - ✧ NOTE: Since the Web Services use the finPOWER Connect business layer, most additions and fixes will be listed in the Knowledge Base under finPOWER Connect and not the Web Services.
- The zip file contains a **finPOWERConnectWS** folder which contains the entire Web Services Web application.
- This setup file should be extracted to a folder on either the Web Server or some other media which can then be used to copy the files to the Web Server, e.g., a USB flash drive or network location.

NOTE: The folder structure for version 6 of Web Services and finPOWER Connect Cloud is significantly different to previous versions.

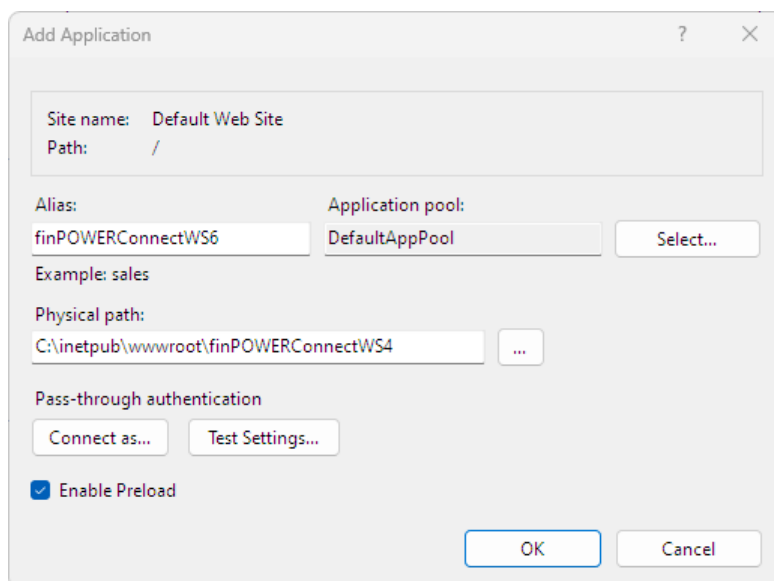
Application Pool Configuration

- finPOWER Connect 6 targets .NET 9+
- Unlike earlier versions of finPOWER Connect (prior to version 6), the Application Pool being used must be configured to use **No Managed Code**, e.g.:



IMPORTANT: Unlike prior versions, finPOWER Connect Web Services and finPOWER Connect Cloud **MUST** use separate Application Pools.

- Each Web site or Web application within IIS uses an Application Pool. To see which Application Pool a Web application is using or change the application pool, click on the site or application in the **Connections** pane of the **Internet Information Services (IIS) Manager** and select **Basic Settings** in the Actions pane.:



IMPORTANT: Ensure 'Enable Preload' is checked. Without this, certain installations may produce a 500 error when finPOWER Connect Cloud or Web Services are first run up.

- The **Select...** button allows a different Application Pool to be used.
- To view an Application Pool's settings or add a new Application Pool, click the **Application Pools** node in the **Connections** pane of the **Internet Information Services (IIS) Manager**.
 - If other Web sites or applications are using the same Application Pool as your Web application, it may be advisable to create a new Application Pool as follows:

- ✧ Right click the **Application Pools** node and select **Add Application Pool....**

Dialog box titled "Edit Application Pool".

Fields and values:

- Name: FINCC6
- .NET CLR version: No Managed Code
- Managed pipeline mode: Integrated
- ☒ Start application pool immediately

Buttons: OK, Cancel

- ✧ Give the Pool a name, e.g., **finPOWERConnectWS6** and click **OK**.
- To edit the settings of an existing (including the newly added) Application Pool, right-click the Application Pool in the Application Pools grid and select **Advanced Settings...**

Dialog box titled "Advanced Settings".

Sections and settings:

- (General)**
 - .NET CLR Version: No Managed Code
 - Enable 32-Bit Applications: False
 - Managed Pipeline Mode: Integrated
 - Name: FINCC6
 - Queue Length: 1000
 - Start Mode: OnDemand
- CPU**
 - Limit (percent): 0
 - Limit Action: NoAction
 - Limit Interval (minutes): 5
 - Processor Affinity Enabled: False
 - Processor Affinity Mask: 4294967295
 - Processor Affinity Mask (64-bit): 4294967295
- Process Model**
 - Generate Process Model Event Log: True
 - Identity: ph@Intersoftnz.Local
 - Idle Time-out (minutes): 20
 - Idle Time-out Action: Terminate
 - Load User Profile: True

Section: **Name**

[name] The application pool name is the unique identifier for the application pool.

Buttons: OK, Cancel

- ✧ Ensure the following Advanced Settings are configured:
 - .NET CLR Version: **No Managed Code**
 - Managed Pipeline Mode: **Integrated**
 - Enable 32-Bit Applications: **False**
 - **IMPORTANT:** MS Access databases are no longer supported, even for testing purposes.

- Edit the Basic Settings of your Web application and select the new Application Pool you have just created.

IMPORTANT: When running finPOWER Connect Cloud and Web Services on the same machine, .NET 9+ requires that each uses a separate ISS Application Pool.